

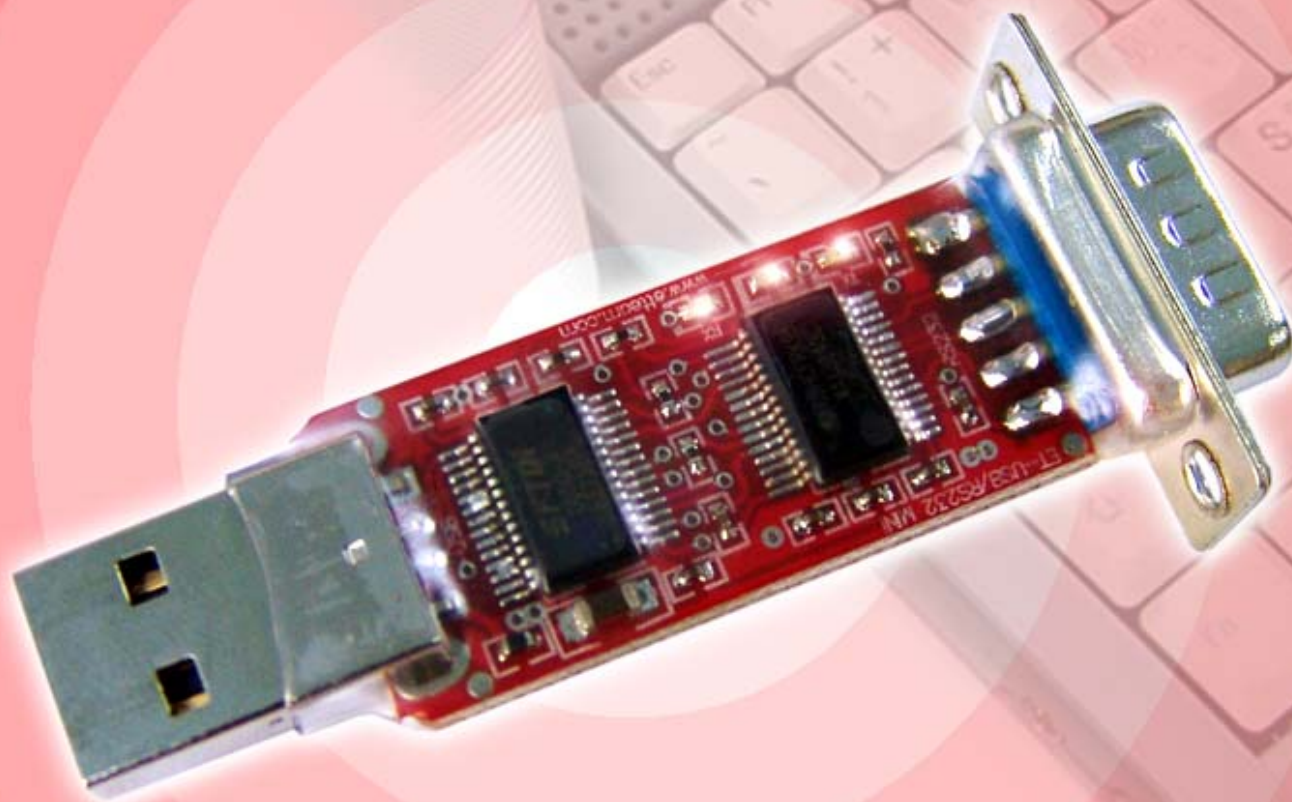
คู่มือการใช้งาน

User's Manual

# ET-USB/RS232 Mini

CHIP FTDI # FTDI232RL

CHIP MAX3243



**ETT**  
www.ett.co.th

บริษัท อีทีที จำกัด **ETT CO., LTD.**

1112/96-98 ถนนสุขุมวิท แขวงพระโขนง เขตคลองเตย กรุงเทพฯ 10110

1112/96-98 Sukhumvit Rd., Phrakanong Klongtoey Bangkok 10110

Tel : 02-7121120 Fax : 02-3917216

<http://www.etteam.com>

<http://www.ett.co.th>

email : sale@etteam.com

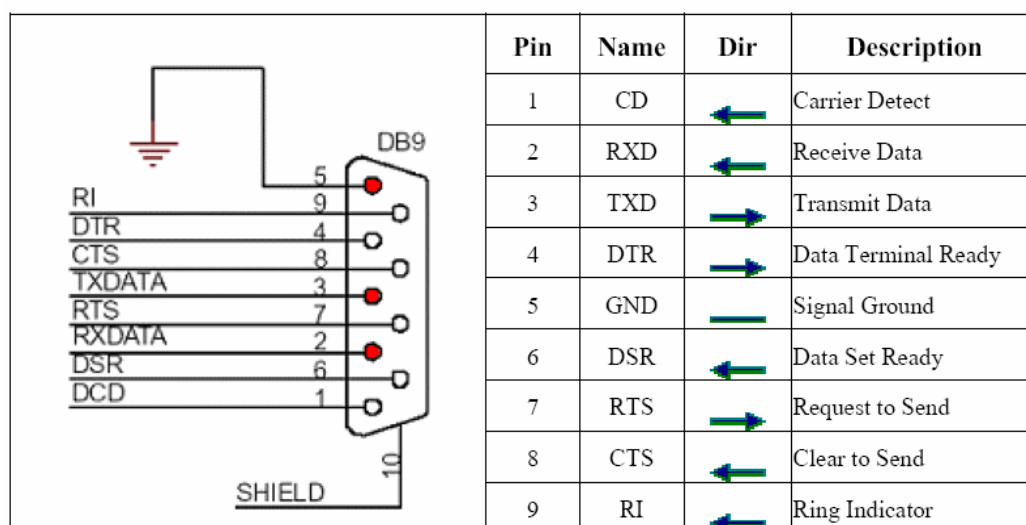
## ET-USB/RS232 MINI

### Specifications of ET-USB/RS232 MINI

- 1.Support standard USB 1.1 and USB 2.0
- 2.Baud Rate from 300 bps to 128 kbps for sending data
- 3.Use Power Supply from USB Port directly without interfacing with external device
- 4.USB Connector TYPE A, DP9 Male RS232 Connector
- 5.3 Colored-LED Display; Receive (RX) = GREEN, Transmit (TX) = YELLOW and POWER (PWR) = RED
- 6.Driver supports Windows 98SE/ME/2000/XP
- 7.Size: 3 cm width x 6.8 cm. length

### Application of ET-USB/RS232 MINI

- 1.Insert ET-USB/RS232 MINI into Port USB of computer and now LED PWR is still OFF.
- 2.Install Driver for ET-USB/RS232 MINI, LED PWR will be ON when Driver has already installed successfully; it means that it ready to apply.
- 3.Interface Serial Port Cable and see pin position from the picture below.

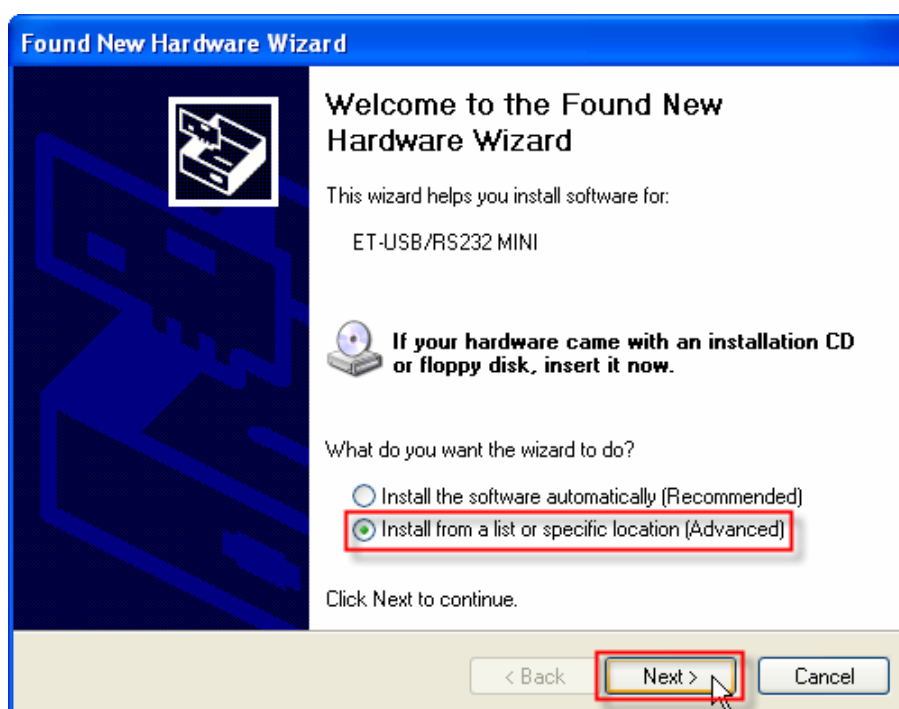


## Installation Driver of ET-USB/RS232 MINI

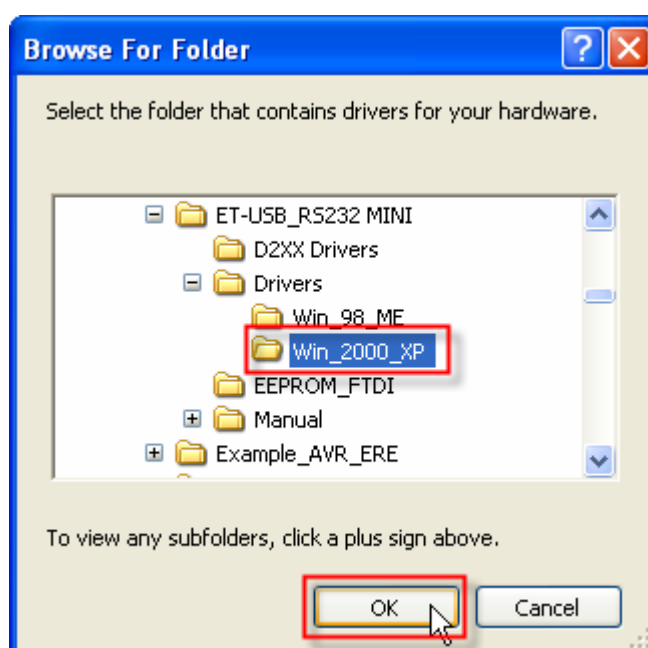
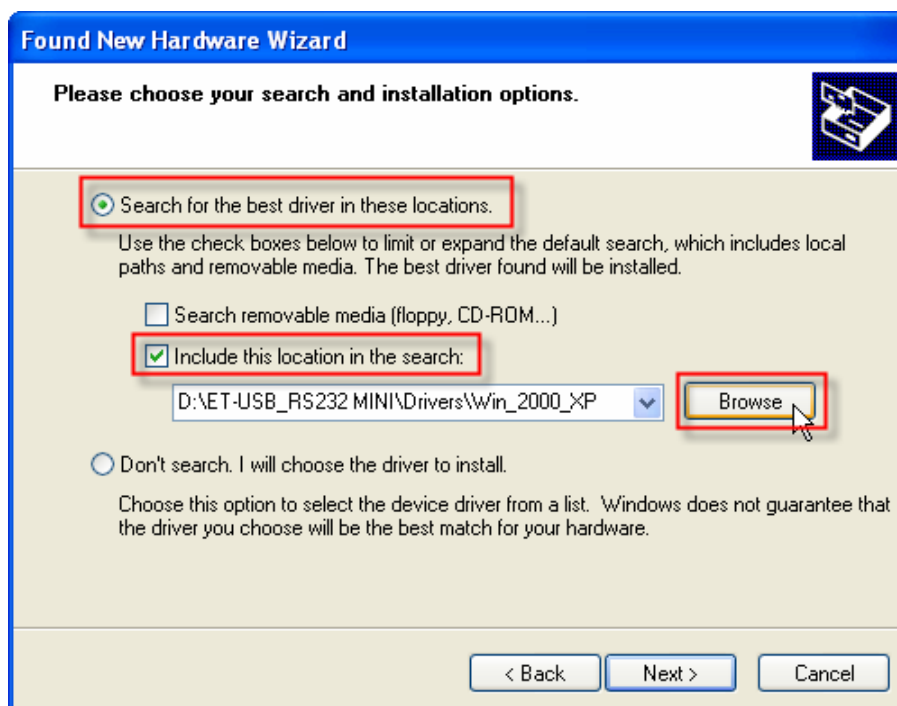
1. Interface **ET-USB/RS232 MINI** with computer through Port USB, then windows have found new Hardware as picture below and now LED PWR is still OFF.



2. It will display windows **"Found New Hardware Wizard"**, click **Install from a list or specific location (Advanced)** and click **Next**.

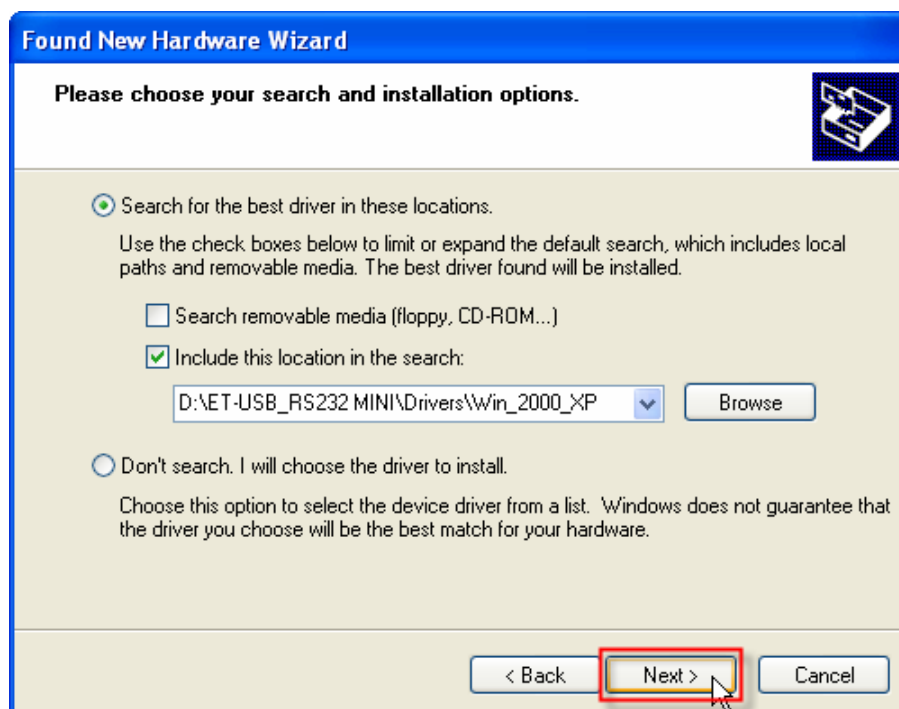


3. Select values as shown below, next click **Browse** to specify location that stores Driver and click **OK**.

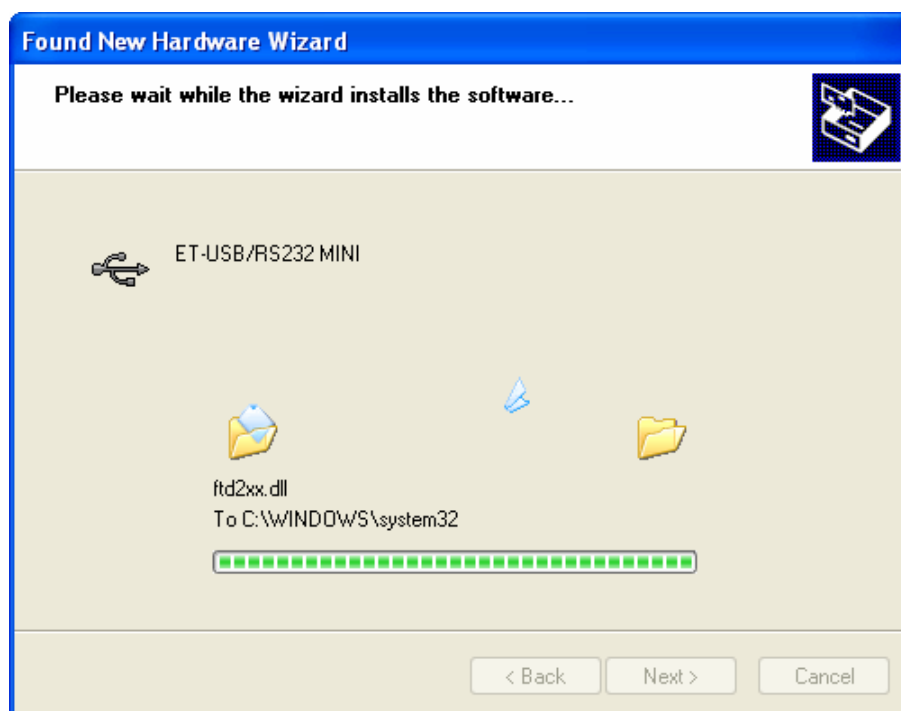


4. Click **Next** after selected all values completely and windows will search Hardware to install Driver.

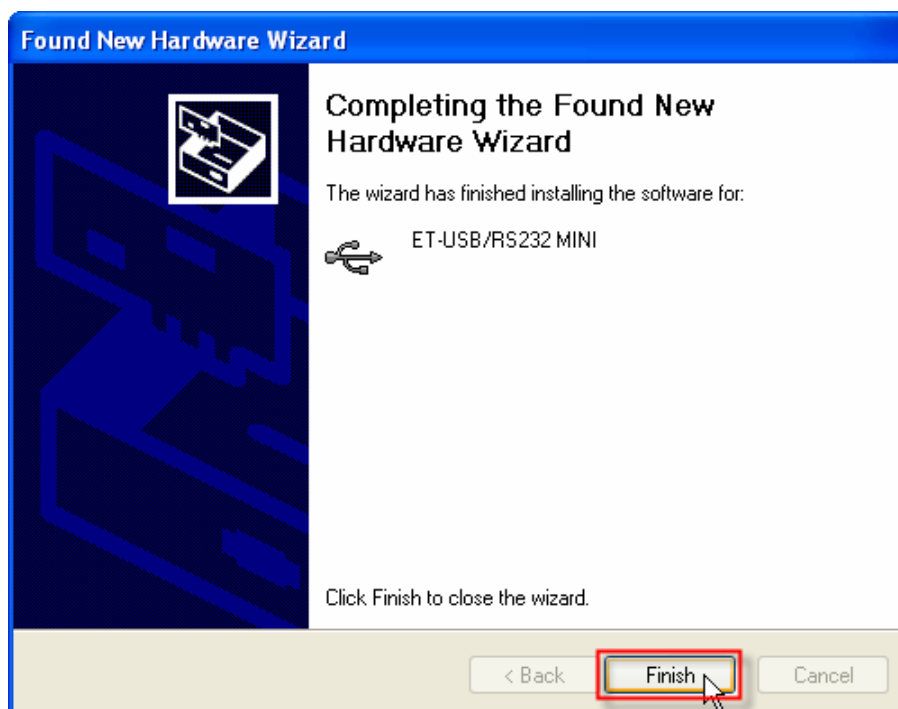




5. It will display window **"Hardware Installation"** and declare that Hardware fails to test by windows, click **Continue Anyway** and windows will install Driver of ET-USB/RS232 MINI.



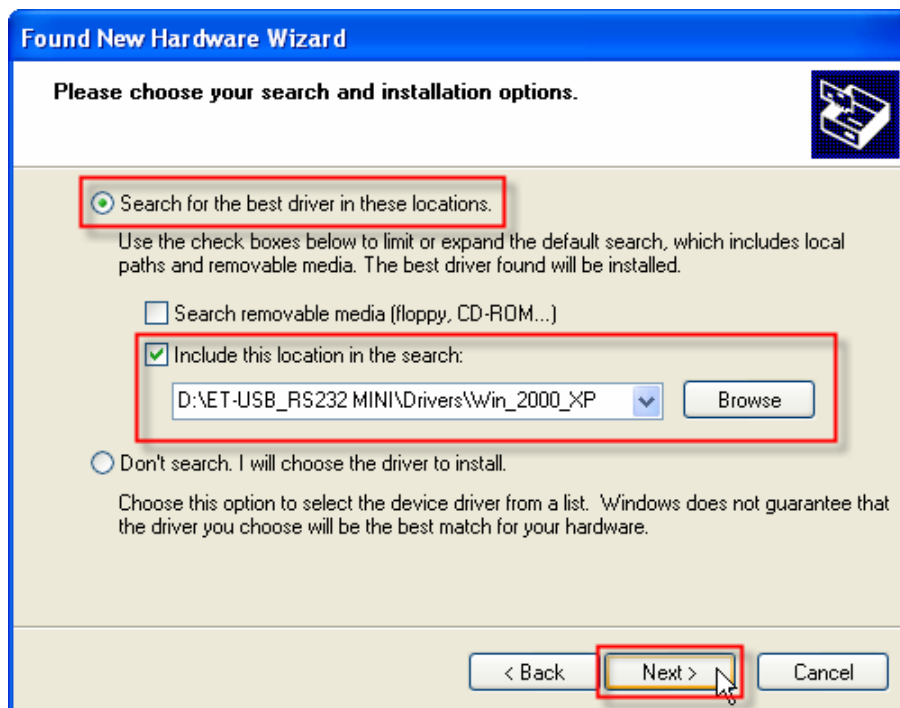
6. Click **Finish** when it displays windows and declares that installation is complete, now LED PWR is ON.



7. Just a moment, Driver will create Serial Port and display windows to install Driver of USB Serial Port as shown below, so we can select values as same as the previous step and then click **Next**.

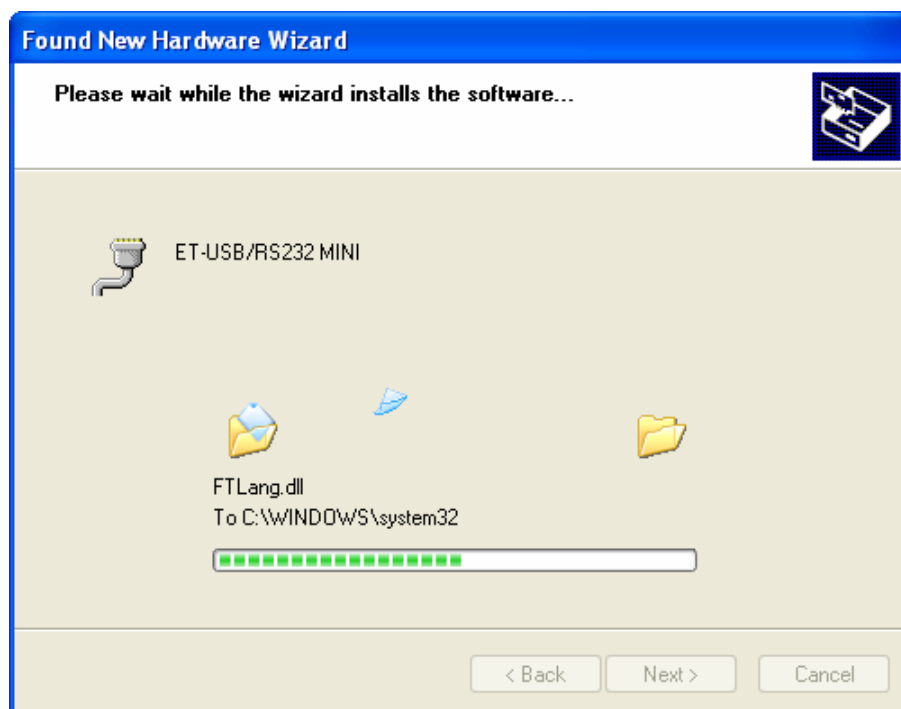
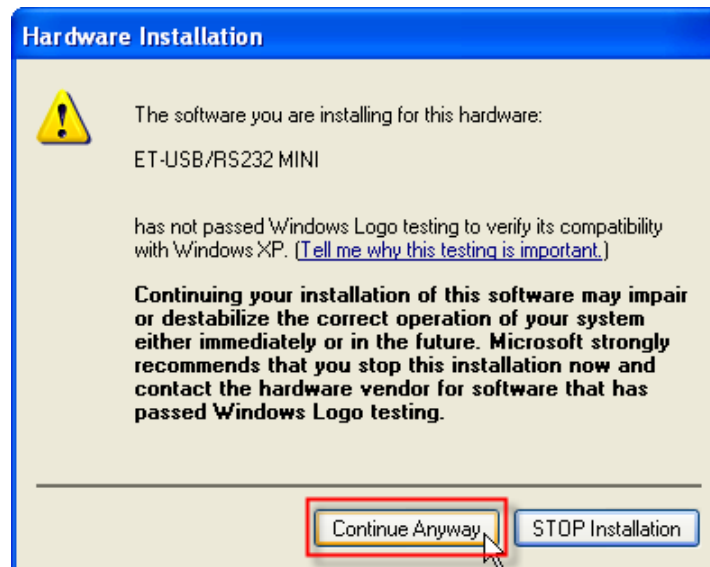


8. Select location of Driver, normally it can remember the old value, so we can click **Next** instantly. Then windows will search Hardware to install Driver.

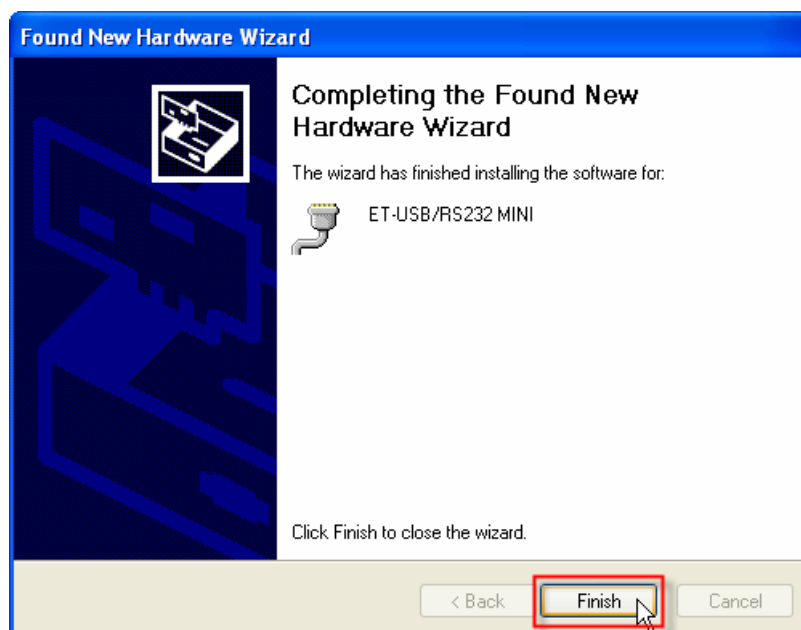




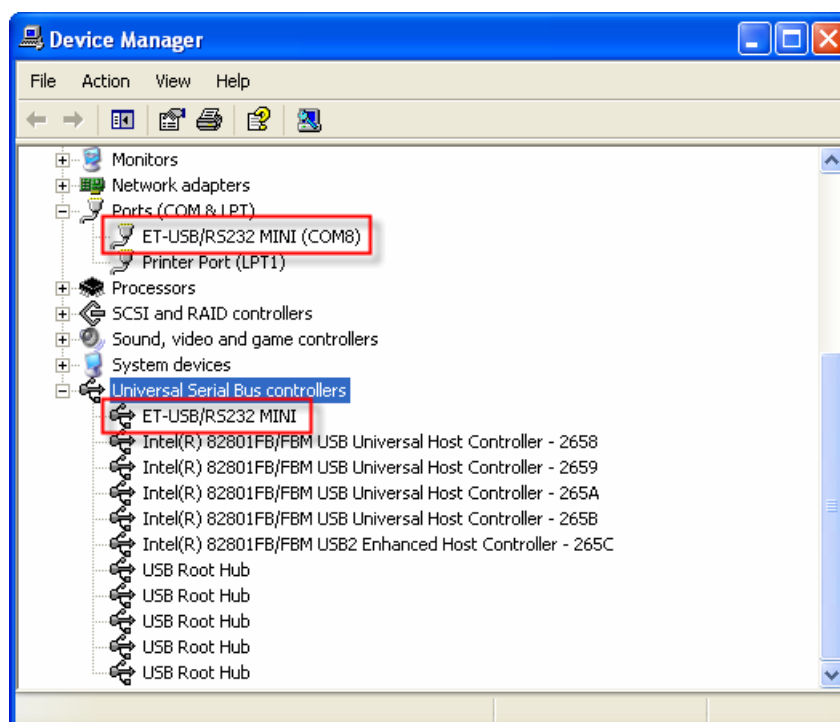
9. It will display windows "Hardware Installation" and declare that Hardware fails to test by windows, click **Continue Anyway** and windows will install driver of ET-USB/RS232 MINI.



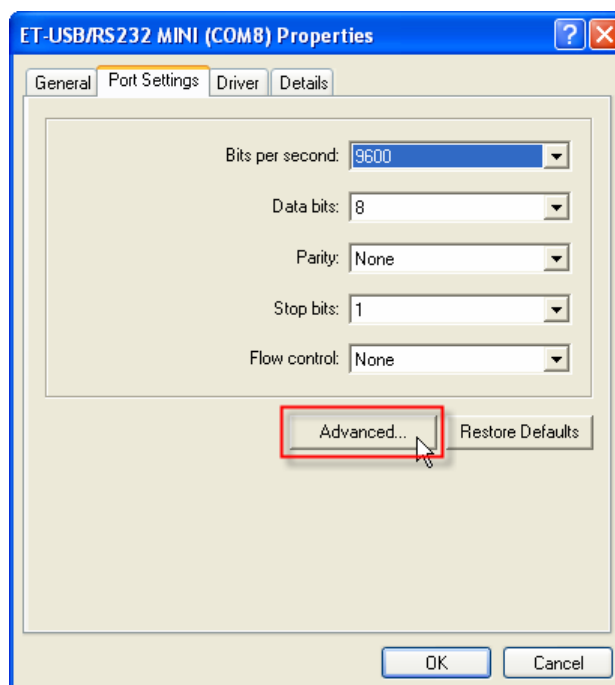
10. It will display windows and declare that installation is complete, **click Finish**.



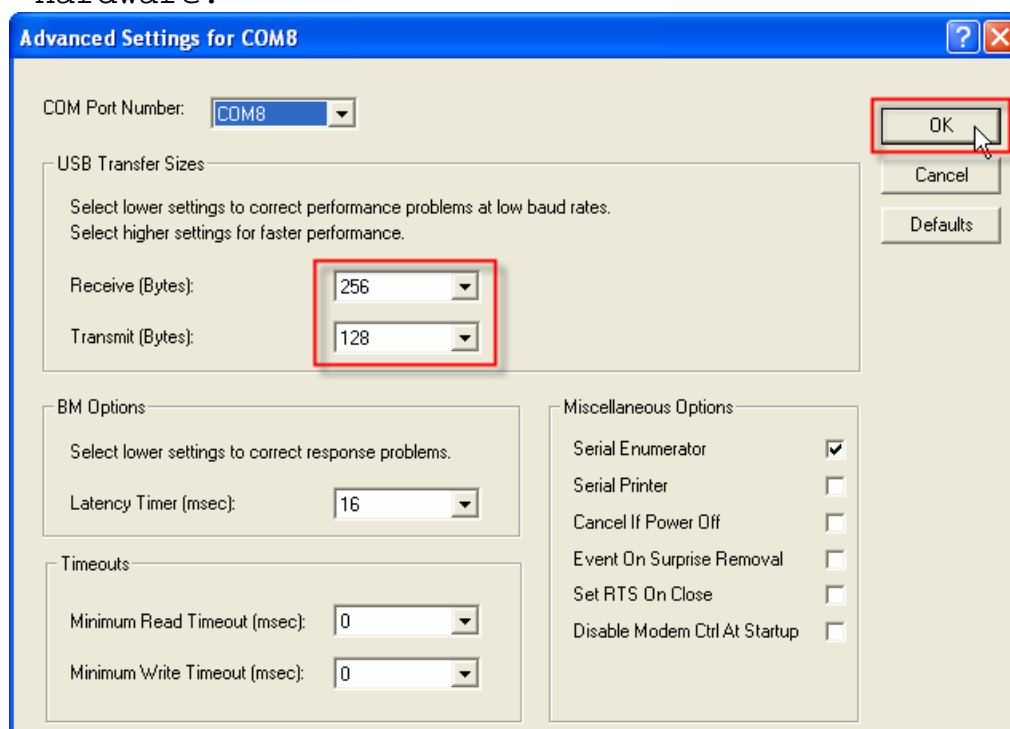
11. We can check whether installation Driver of ET-USB/RS232 MINI is complete, click **Control Panel** → **System** select **Tab Hardware** and select **Device Manager**, it shows list of Hardware ET-USB/RS232 MINI as shown below.



12. Double click ET-USB/RS232 MINI in the part of **Ports(COM&LPT)**, it will display window **Properties** as shown below, select **Port Setting** and click **Advanced...**.

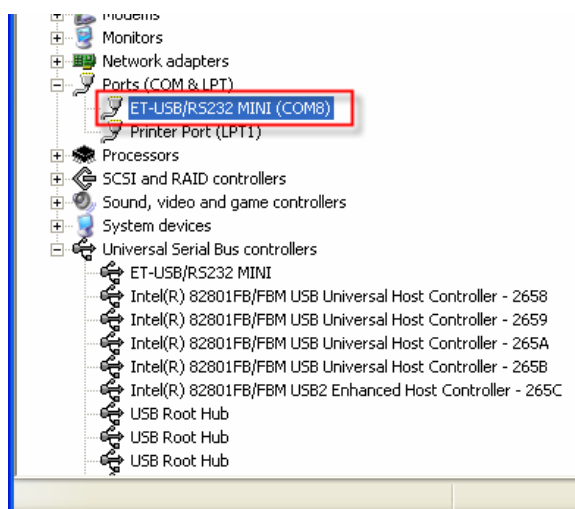


13. Set **Receive(Bytes)** and **Transmit(Bytes)** as shown below and then click **OK** to confirm the change. Next restart computer or scan new Hardware.

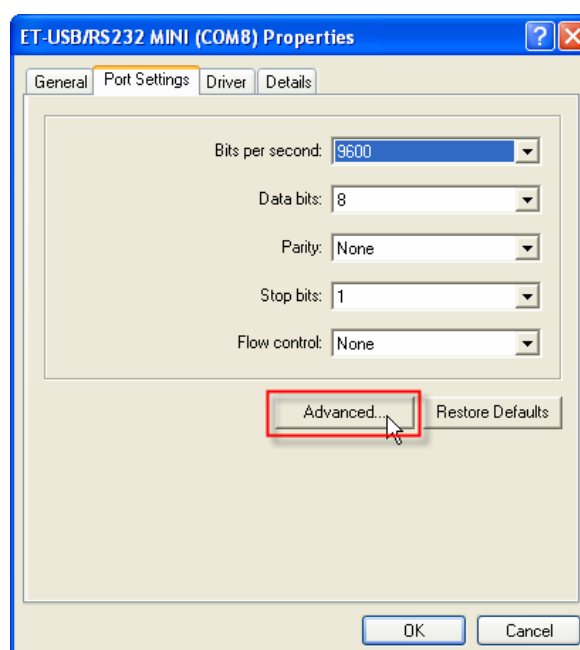


## The method to modify COM Port number

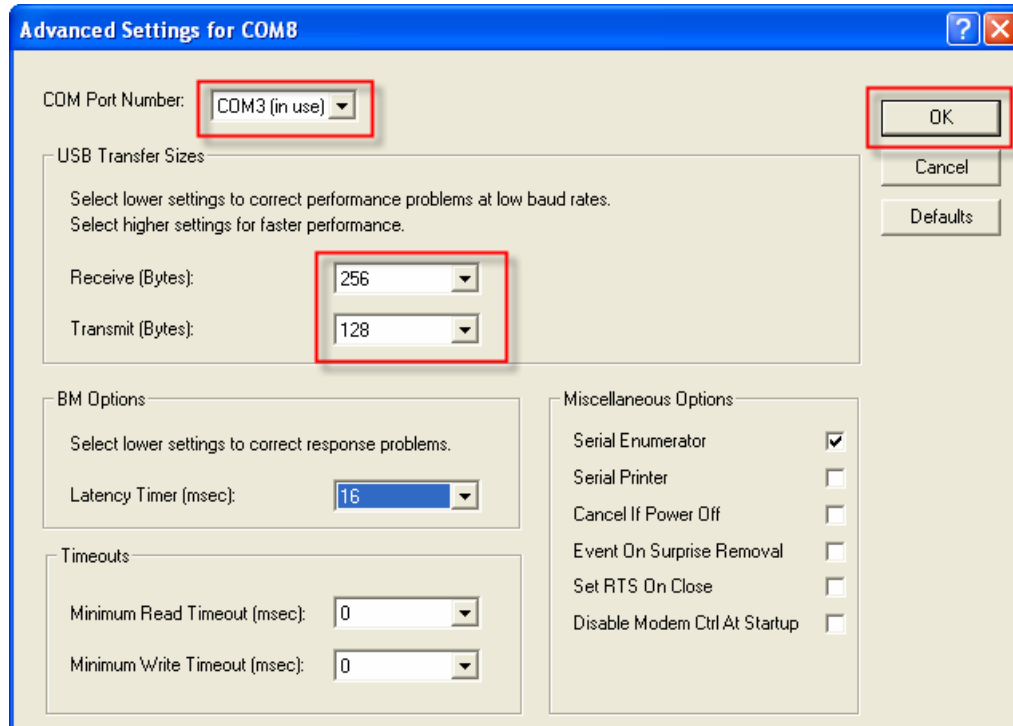
1. Go to **Control Panel** → **System** select Tab **Hardware** and select **Device Manager**, we can see list of Hardware ET-USB/RS232 MINI. From the picture, it is COM8 (COM Port number will be changed depend on each computer).



2. It supposes that ET-USB/RS232 MINI is COM8 if we want to modify COM Port number from COM8 to be COM8, we must double click **ET-USB/RS232 MINI** and it will display window **Properties** as shown below, select **Port Setting** and then click **Advanced...**

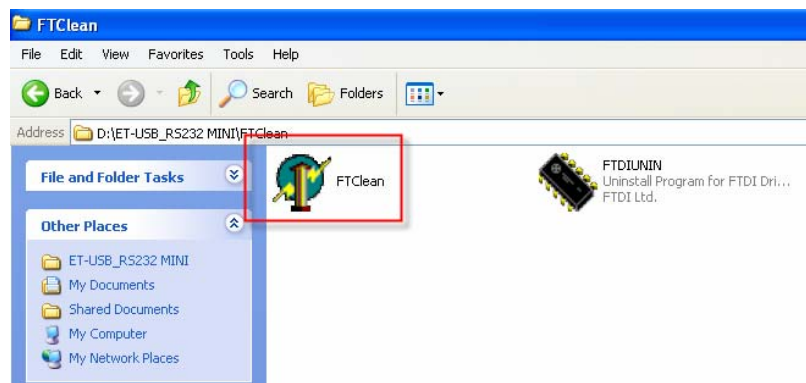


3. Modify COM Port Number to be COM3, set **Receive (Bytes)** and **Transmit(Bytes)** as shown below and then click **OK** to confirm the modification. Next restart computer or scan new Hardware.



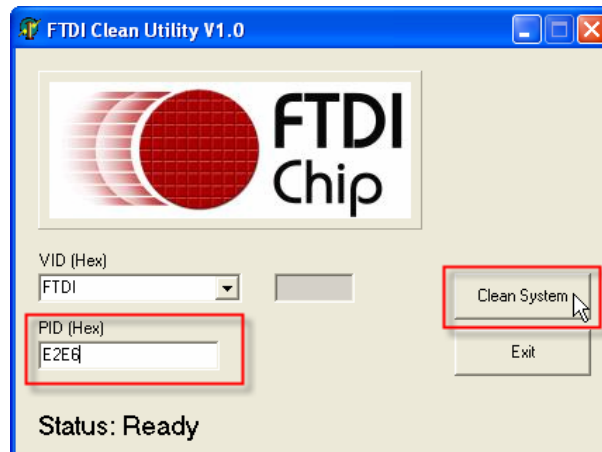
### The method to cancel installation Driver

1. Recommend using **Program FTDI Clean Utility** of FTDI, then open **program FTDI Clean utility** as shown below.





2. Write PID value that ET-USB/RS232 MINI uses **E2E6**, and then click **Clean System**.

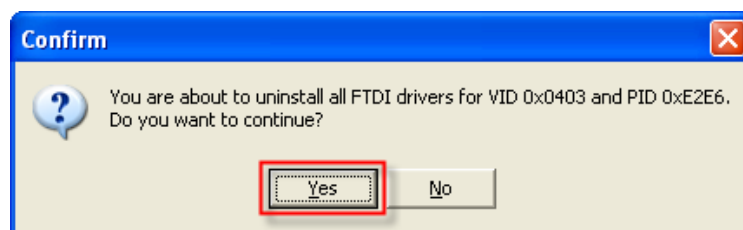


3. It will display windows to introduce user to take off component (ET-USB/RS232 MINI) from computer.

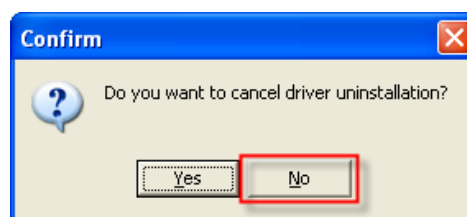


4. It will display window to confirm cancel installation, click **Yes** to confirm.





5. Program will ask about cancel uninstall Driver, click **No**.



6. It will display message **"System clean completed"** if everything is successful without any error as shown below.

